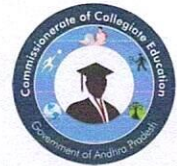




GOVERNMENT DEGREE COLLEGE



Affiliated to Andhra University

(Upgraded to Model Degree College under RUSA 2.0)

Paderu, Alluri Sitarama Raju-District, AP.

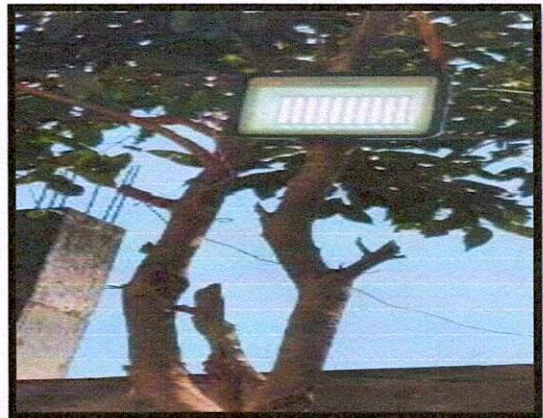
Est:1985 NAAC "C" Grade phone no: 08935 250013

Email.ID : paderu.jkc@gmail.com.

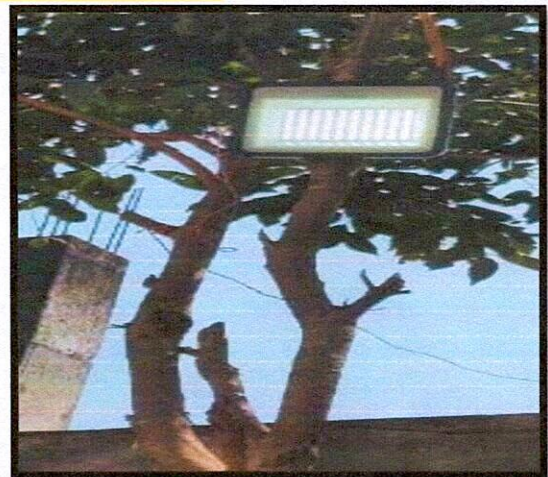
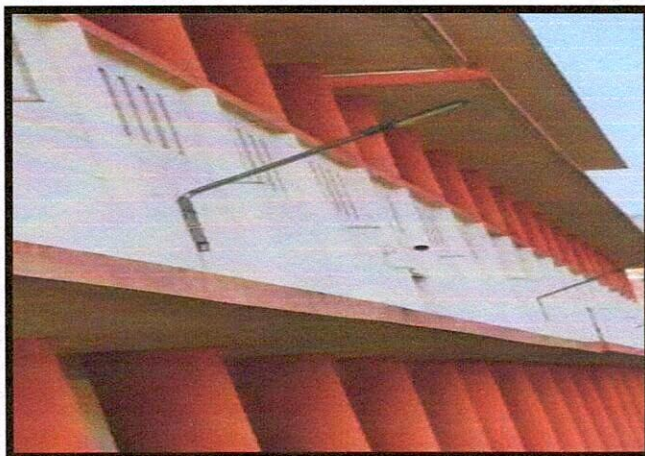
7.1.2 The Institution's Facilities and Initiatives for

1. Alternate Sources of Energy and Energy Conservation Measures

Proper energy usage is a crucial responsibility for any institution. To support this, we have implemented the use of LED bulbs to decrease power consumption. The adoption of these energy-efficient bulbs has successfully reduced our electricity usage. These LED bulbs have been installed in various locations throughout the college to ensure adequate lighting while conserving energy.



Using of LED lights in Govt. Degree College Paderu



At Government Degree College, Paderu, proper energy usage is a crucial responsibility. As part of our commitment to sustainability, we have implemented solar energy solutions to reduce our reliance on conventional power sources. Solar panels have been installed in strategic locations across the campus, harnessing sunlight to generate clean and renewable energy.



Solar energy used as alternative source of energy



Solar panels arranged on the roof of Science block



V. V.
Principal
Govt. Degree College
PADERU-531024
Alluri Sitharama Raju Dist.


Energy Conservation Measures:

Based on the analysis of our campus's power consumption data, several steps have been recommended to improve energy efficiency. A thorough cost analysis of the implementation of these measures has been conducted where necessary. Additionally, a list of general energy efficiency practices has been provided.

- **Unplugging Unused Appliances:** Ensure electronic appliances not in use are unplugged or disconnected from power sockets (e.g., switch off loudspeakers, printers, and photocopiers when not in use).
- **Avoid Standby Mode:** Refrain from keeping appliances in 'STANDBY MODE' to prevent unnecessary power consumption.
- **Remove Faulty Lighting:** Identify and replace any faulty lighting fixtures.
- **Promote Energy Awareness:** Display messages in classrooms and labs about the proper use of electrical appliances like lights, fans, laptops, and projectors. Post stickers with the message "Save electricity. Save the environment" throughout the campus to encourage energy conservation.
- **Optimize Natural Lighting:** In classrooms, if there is sufficient natural light near the windows, turn off the row of lights closest to the windows.
- **Power-Saving Features:** Enable power-saving features on all campus computers to turn off monitors and internal hard drives after 10 or 30 minutes of inactivity.
- **Air Conditioning Settings:** Set air conditioning units to a comfortable/default temperature range of 24°C to 26°C.
- **Daytime Lighting in Toilets:** Keep lights in toilet areas off during the daytime.
- **Upgrade to LED Lighting:** Replace fluorescent tubes (FTL) and ordinary bulbs with smart LED tubes, LED bulbs, or solar lamps.
- **Monitor Upgrades:** Replace ordinary CRT monitors with energy-efficient LED monitors.

By implementing these measures, we aim to significantly enhance the energy efficiency of our campus and promote a culture of sustainability.




Principal
Govt. Degree College
PADERU-531024
Sulluri Sitharama Raju Dist.